

# Cambridge High School Orchestras

## 2019-2020 Placement Auditions – BASS Packet

Thank you for your interest in the CHS Orchestras! Please read the following information carefully. Auditions are required for the following groups: Philharmonic Orchestra (GMEA Level IV), Chamber Orchestra (GMEA Level V), and Camerata (GMEA Level VI). No auditions are required for Symphonic Orchestra (GMEA Level III). Your audition contains five steps:

- 1) Register for “Pre-Audition Orchestra” on your Course Verification Form
  - If you are currently enrolled at Cambridge High School, Hopewell Middle School, or Northwestern Middle School, your audition will only be considered if you are listed as enrolled in the course
- 2) Learn the audition repertoire
  - Philharmonic Orchestra: Two one-octave scales and arpeggios
  - , one excerpt
  - Chamber Orchestra: One two-octave scale and arpeggio, one excerpt
  - Camerata: One three-octave scale and arpeggio, one excerpt
- 3) Record and upload your audition video
  - Detailed instructions are found on the next page
  - Upload your video as an ‘unlisted’ or ‘public’ link to YouTube
  - The deadline to submit the video and the Google Form is 11:59pm on Friday, March 22<sup>nd</sup>
  - Do not wait until the last minute in case you have technical issues!
- 4) Fill out the following Google Form: <https://goo.gl/forms/ov6yLWrhzYFeXg53>
  - Include the direct link to your video submission
  - Provide summer contact information
- 5) Stay tuned for placement results
  - Placements will be posted on [cambridgestrings.org](http://cambridgestrings.org) at 4:30pm on Friday, March 29<sup>th</sup>

If you are not selected for the orchestra level you auditioned for, you will automatically be considered for placement in the ensemble one level below.

You must audition for each instrument and each ensemble in which you wish to perform – for example, if you wish to play violin in Camerata and viola in Chamber, you must submit two separate audition videos and two separate Google Forms. Similarly, if you wish to play violin and harp in the same ensemble, you must still submit two separate audition videos and two separate Google Forms.

**THE DEADLINE FOR SUBMISSION IS MONDAY, MARCH 25<sup>th</sup> AT 11:59PM.**

Please feel free to contact me at [benz@fultonschools.org](mailto:benz@fultonschools.org) if you have any questions or concerns. I look forward to working with you next year in orchestra!

Sincerely,

Ms. Benz, Director

# Audition Videos

## Getting the proper camera angles

Video instructions courtesy  
of Dr. Charles Laux,  
Alpharetta HS Orchestras

**Violin & Viola** players should be at an angle to the camera and the entire left hand/arm and entire right hand and bow stroke should be visible. The music stand should be out in front of you and away from the shot.



### Violin & Viola

**YES!**



**NO!**




**NO!**




**NO!**

**Cello** players should be straight on to the camera. This may require that you move the music stand to your left.




### Cello


**YES!**



**NO!**



**NO!**



**NO!**

**Double Bass** players should also be straight on to the camera. This may require that you move the music stand to your left.

If you are using a phone, a vertical (portrait) mode video may be best for bassists.



### Double Bass

**YES!**



**NO!**



**NO!**



**NO!**

## Philharmonic Orchestra (GMEA Level IV)

Any provided fingerings or positions for the following scales and excerpt are suggestions only; any systematic fingering may be used. Please follow the rhythms and tempos listed below for the scales, not the rhythms listed in the method book example.

### 1) SCALES AND ARPEGGIO

Students will play the following one-octave scales and arpeggio:

D Major Scale, One Octave– One quarter note per bow, detached. Quarter note = 120.

D Major Arpeggio – One quarter note per bow. Quarter note = 80.

Bb Major Scale, One Octave– One quarter note per bow, detached. Quarter note = 120.

Bb Major Arpeggio – One quarter note per bow. Quarter note = 80.

#### 193. D MAJOR



#### 198. Bb MAJOR



### 2) ETUDE

Students will play a portion of the following etude:

Franz Simandl, 30 Etudes for String Bass, #1. Quarter note = 100.

**Maestoso** ♩ = 100.

1.

## Chamber Orchestra (GMEA Level V)

Any provided fingerings or positions for the following scales and excerpt are suggestions only; any systematic fingering may be used. Please follow the rhythms and tempos listed below for the scales, not the rhythms listed in the method book example.

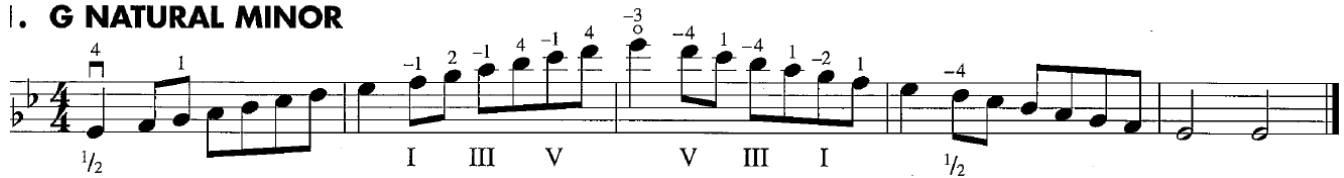
### 1) SCALES AND ARPEGGIO

Students will play the following two-octave scale and arpeggio:

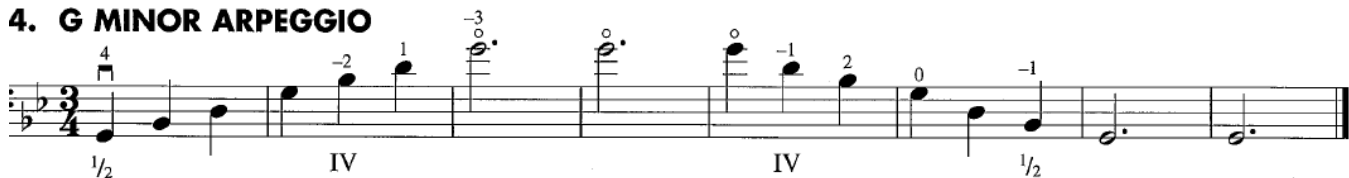
G Natural Minor Scale, Two Octave— One quarter note per bow, detached. Quarter note = 120.

G Minor Arpeggio – One quarter note per bow, detached. Quarter note = 80.

#### I. G NATURAL MINOR



#### 4. G MINOR ARPEGGIO



### 2) ETUDE

Students will play a portion of the following etude:

Franz Simandl, 30 Etudes for String Bass, #8. Half note = 70.

**Allegro moderato.**



STOP

## Camerata (GMEA Level VI)

Any provided fingerings or positions for the following scales and excerpt are suggestions only; any systematic fingering may be used. Please follow the rhythms and tempos listed below for the scales, not the rhythms listed in the method book example.

### 1) SCALES AND ARPEGGIO

Students will play the following three-octave scale and arpeggio (no repeats):

A Melodic Minor Scale, Three Octave– One quarter note

per bow, detached. Quarter note = 120. Include lower octave shift at beginning and end. No repeat.

A Minor Arpeggio – One quarter note per bow, detached. Quarter note = 80

#### 23. A MELODIC MINOR SCALE

0 2 1 0 1 2 0 0 1 4 0 1 2 0 1 4 -1 -1 4 -1 4 -1 4 -1 4 -2

I 1/2 I III V 1/2 VII V III I 1/2 I

#### 24. A MINOR ARPEGGIO

0 2 1 0 2 -1 1 -4 2 -3 3 -2 4 -1 1 -2 0 1 2 0

I IV V VII V IV I

### 2) ETUDE

Students will play a portion of the following etude:

Franz Simandl, 30 Etudes for String Bass, #17. Quarter note = 80.

#### Tempo di Polacca.

17. STOP