



Alpharetta High School Orchestras

2019-2020 Placement Auditions - **BASS PACKET**

Dear orchestra student,

Thank you for your interest in auditioning for the Alpharetta High School Orchestra! Auditions are required only for Philharmonia (level 2), Sinfonia (level 3) and Symphony (level 4). You will prepare required two scales and an etude. No audition is required for Concert Orchestra. Students will be selected for the AHS Chamber Orchestra (level 5) based upon the Symphony (level 4) audition).

Please read and carefully follow the directions below...

1. Record your audition video

- * Your video should be ONE uncut clip of the two scales and required etude.
- * Be sure that the lighting is good and image/audio are clear
- * Be sure that you can clearly see your entire bow stroke and left hand
- * Horizontal (landscape) is better for violin/viola and Vertical (portrait) sometimes works better for cello/bass
- * Video of the scales and etude should be in ONE continuous shot. Do not pause the camera or edit your video. Cropping of the beginning/end is acceptable.

2. Upload your video

- * Upload your video to **YouTube**. <http://www.youtube.com>
- * Please make sure the video is either UNLISTED or PUBLIC so that it can be viewed by Dr. Laux.
- * Once finished uploading, save and make note of your video's URL

3. Complete the online audition form

- * Go to <https://goo.gl/GNm55c> or scan the QR Code
- * Complete the form and copy/paste your video URL
(You will receive an email confirmation of your submission.)



4. Visit the AHS Orchestra website

- * Visit us at <http://www.alpharettaorchestra.org> or use the QR code
- * Use the "connect" menu to find our social media accounts
- * Find us on Facebook, Twitter, Instagram, and Snapchat
- * You can also subscribe to our YouTube channel



YOU MUST SUBMIT A SEPARATE VIDEO AND AUDITION FORM FOR EACH ORCHESTRA YOU ARE AUDITIONING FOR.

THE DEADLINE FOR SUBMISSION IS FRIDAY, MARCH 29, 2019 at 11:59 PM

Please contact me if you have questions or concerns. I look forward to seeing you next year in orchestra!

Sincerely,

Dr. Charles Laux, Orchestra Director

lauxc@fultonschools.org

Playing Test & Audition Videos

Getting the proper camera angles



Violin & Viola players should be at an angle to the camera and the entire left hand/arm and entire right hand and bow stroke should be visible. The music stand should be out in front of you and away from the shot.



Violin & Viola

YES!



NO!



NO!



NO!

Cello players should be straight on to the camera. This may require that you move the music stand to your left.



Cello

YES!



NO!



NO!



NO!

Double Bass players should also be straight on to the camera. This may require that you move the music stand to your left.

If you are using a phone, a vertical (portrait) mode video may be best for bassists.



Double Bass

YES!



NO!



NO!



NO!



Alpharetta High School Orchestra Auditions 2019-2020

PHILHARMONIA (LEVEL 2)

BASS SCALES & ARPEGGIOS

Students will play the following two-octave scales along with the required etude.

- F Major, 2 octaves, Two eighth notes **slurred** (eighth notes = 120 BPM)
- F melodic minor, 2 octaves, quarter note **detached** (quarter note = 60 BPM)

Note: The provided fingerings are merely suggestions. Students taking private lessons should use those fingerings as provided by their teacher.

F Major



F Melodic Minor





Alpharetta High School Orchestra Audition Excerpt
2019-2020

BASS - PHILHARMONIA (Level 2)

Quarter Note = 120

#8 from Simandl: 30 *Etudes for the String Bass*

Allegro moderato.

8.

STOP





Alpharetta High School Orchestra Auditions 2019-2020

SINFONIA (LEVEL 3)

BASS SCALES & ARPEGGIOS

Students will play the following two-octave scales along with the required etude.

- G Major, 2 octaves, Two eighth notes **slurred** (eighth notes = 120 BPM)
- F melodic minor, 2 octaves, quarter note **detached** (quarter note = 60 BPM)

Notes:

- The provided fingerings are merely suggestions. Students taking private lessons should use those fingerings as provided by their teacher.
- Students do not have to follow the rhythms shown below for the scales. The use of a “Galamian turn” is encouraged.

G Major

Two Octaves

Ascending: 2, 4, 1, 3, 0, 1, 4, -1, 4, -1, 3, 0, 3, -3, 1, -4, 1, -4, 1, 0. Fingering: III, V, V, III, I.

Descending: 0, 4, 1, 3, 0, 1, 4, -1, 4, -1, 3, 0, 3, -3, 1, -4, 1, -4, 1, 0. Fingering: IV, IV, I.

F Melodic Minor

Two Octaves

Ascending: 1, -2, 4, -1, 4, 0, 2, 0, 1, 4, -1, 4, -2, 4, (b)1, (b)-2, 1, -4, 1, 0, 4, 1, -4, 2, -1, -4, 2, -1. Fingering: 1/2, I, 1/2, III, V, III, 1/2, I, piv.

Descending: 1, -4, A2, D2, -4, 2, -2, D4, A2, E4, -1. Fingering: 1/2, I, II1/2, V, II1/2, 1/2.





Alpharetta High School Orchestra Audition Excerpt
2019-2020

BASS - SINFONIA (Level 3)

Quarter Note = 112

#16 from Simandl: 30 *Etudes for the String Bass*

Allegro marcato. ♩ = 112.

16. *f*

STOP





Alpharetta High School Orchestra Auditions 2019-2020

SYMPHONY (LEVEL 4)

BASS SCALES & ARPEGGIOS

Students will play the following two-octave scales along with the required etude.

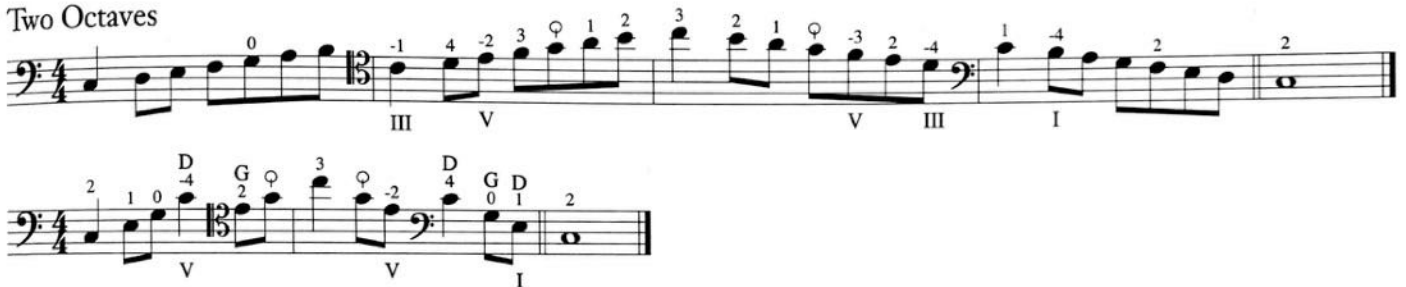
- C Major, 2 octaves, Two eighth notes **slurred** (eighth notes = 120 BPM)
- A melodic minor, 2 octaves, quarter note **detached** (quarter note = 60 BPM)

Notes:

- The provided fingerings are merely suggestions. Students taking private lessons should use those fingerings as provided by their teacher.
- Students do not have to follow the rhythms shown below for the scales. The use of a "Galamian turn" is encouraged.

C Major

Two Octaves



A Melodic Minor

Two Octaves





Alpharetta High School Orchestra Audition Excerpt
2019-2020

BASS - SYMPHONY (Level 4)

Quarter Note = 88

#17 from Simandl: 30 *Etudes for the String Bass*

Tempo di Polacca. ♩ = 88.

17.

ritardando

STOP

mf

